

# Year 9

Flute

C Major Triple Tongue

di gi di

I

IV

V7

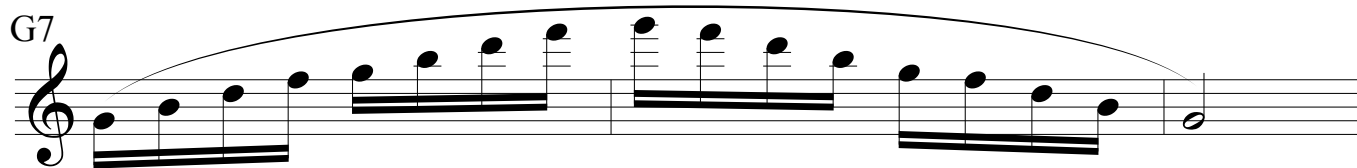
I

c harmonic minor, double tongue three octaves

c melodic minor, double tongue three octaves

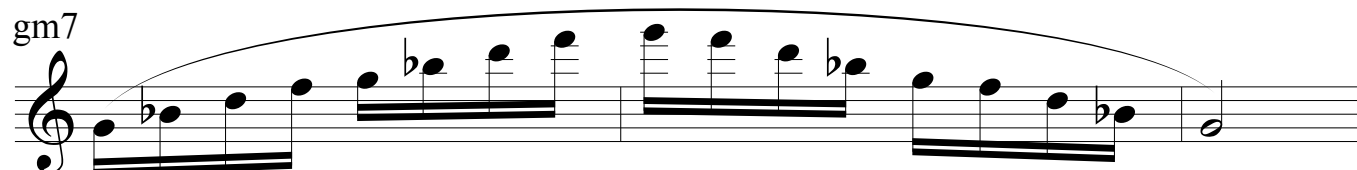


G7



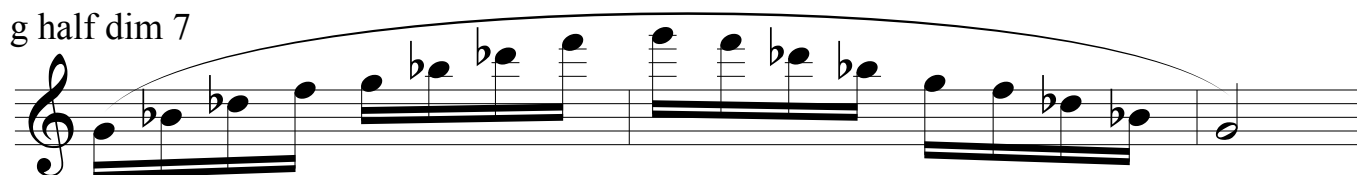
A musical staff in treble clef showing a G7 chord exercise. The notes are G4, A4, B4, C5, B4, A4, G4, F4, E4, D4, C4, G4. The notes are grouped into pairs of eighth notes: (G4, A4), (B4, C5), (B4, A4), (G4, F4), (E4, D4), (C4, G4). A slur covers the entire sequence.

gm7



A musical staff in treble clef showing a gm7 chord exercise. The notes are G4, A4, B4, C5, B4, A4, G4, F4, E4, D4, C4, G4. The notes are grouped into pairs of eighth notes: (G4, A4), (B4, C5), (B4, A4), (G4, F4), (E4, D4), (C4, G4). A slur covers the entire sequence.

g half dim 7



A musical staff in treble clef showing a g half dim 7 chord exercise. The notes are G4, A4, B4, C5, B4, A4, G4, F4, E4, D4, C4, G4. The notes are grouped into pairs of eighth notes: (G4, A4), (B4, C5), (B4, A4), (G4, F4), (E4, D4), (C4, G4). A slur covers the entire sequence.

g dim 7



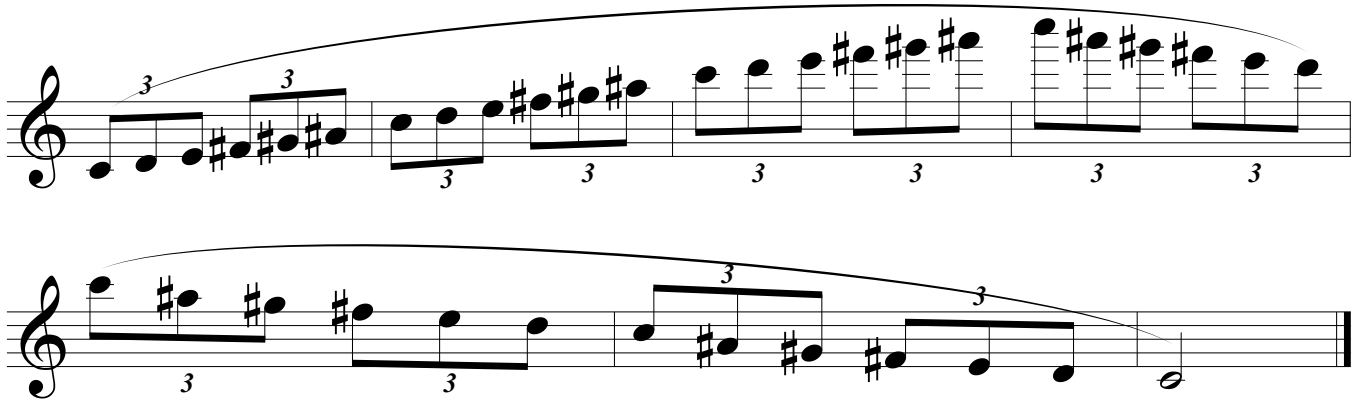
A musical staff in treble clef showing a g dim 7 chord exercise. The notes are G4, A4, B4, C5, B4, A4, G4, F4, E4, D4, C4, G4. The notes are grouped into pairs of eighth notes: (G4, A4), (B4, C5), (B4, A4), (G4, F4), (E4, D4), (C4, G4). A slur covers the entire sequence.

Thirds in Eb M



Three musical staves in treble clef showing thirds in Eb major. The notes are Eb4, F4, G4, Ab4, Bb4, C5, Bb4, Ab4, G4, F4, Eb4. The notes are grouped into pairs of eighth notes: (Eb4, F4), (G4, Ab4), (Bb4, C5), (Bb4, Ab4), (G4, F4), (Eb4, Eb4). A slur covers the entire sequence.

## C Whole Tone Scale, slur



Use this to help you memorize your scales.  
 To be completed in less than 3:30 minutes.  
 All scales are one tongue stroke per note.

## Scales &amp; Arpeggios

C Major (3 octaves), triple tongue --- C Major - I IV V7 I, slur - c1 to c4, full range  
 c harmonic & melodic minor (3 octaves), double tongue --- c minor - i iv V i, tongue-  
 c1 to c4, full range

Dorian on G, slur (2 octaves)

Mixolydian on D, tongue (2 octaves)

Arpeggios on G, -GM7, G7, gm7, g half dim7, g dim 7 - slur (2 octaves)

C Whole Tone Scale (3 octaves) - slur & Thirds in EbM (up to c4) - slur 2, tongue 2